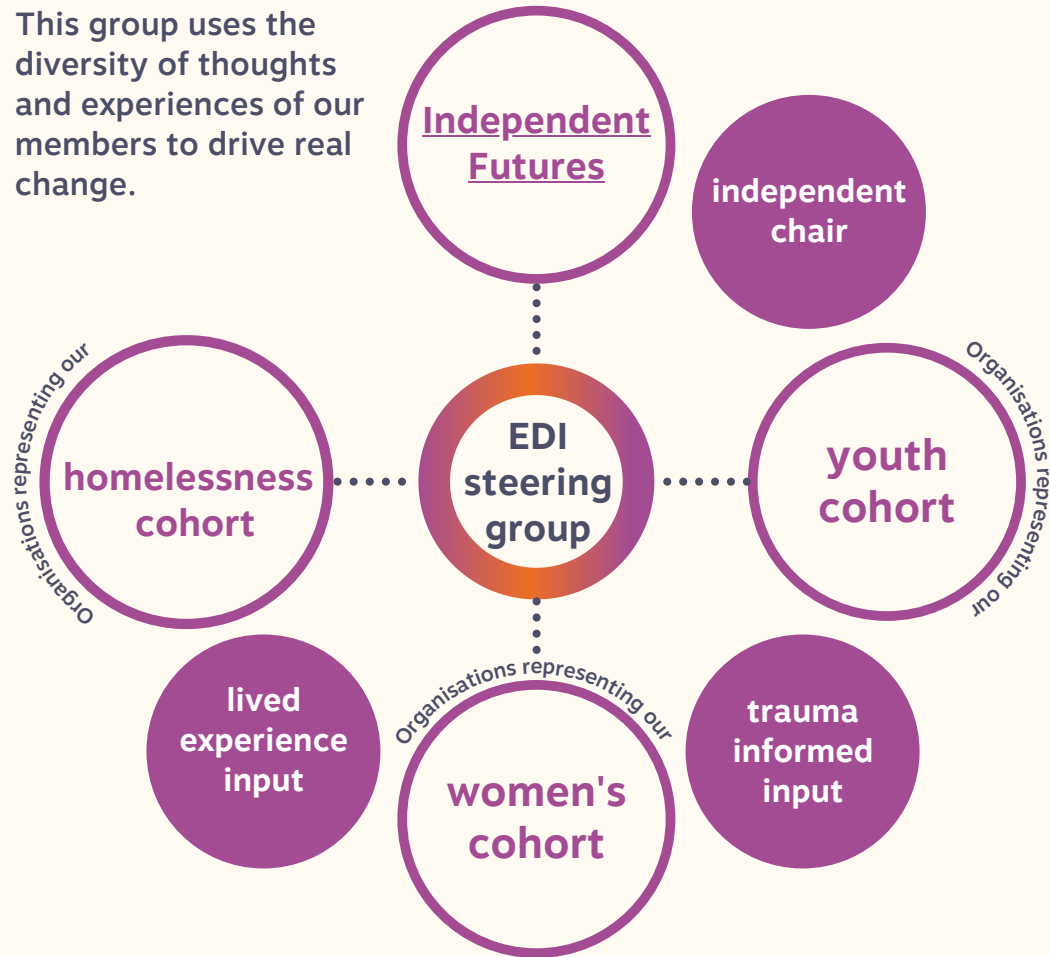


EDI steering group

Equality, Diversity and Inclusion (EDI) is about creating safe spaces to address some topics that may be traumatic to individuals.

The steering group values and practises this through checking in and being chaired in a safe, fair and psychologically informed manner.

This group uses the diversity of thoughts and experiences of our members to drive real change.



We still have some spaces on the steering group so if you have a particular passion for your community, the criminal justice system, or young people and would like to help address EDI issues that currently exist, we would like to invite you to this group.

Please email: temba.kundaimahari@changingfuturesbristol.co.uk for more information.